






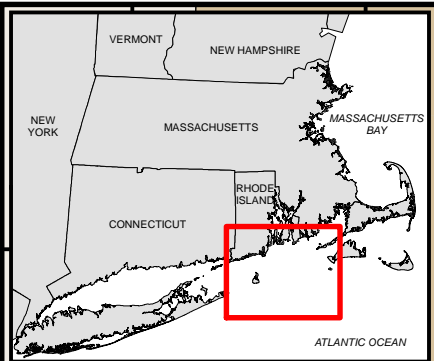
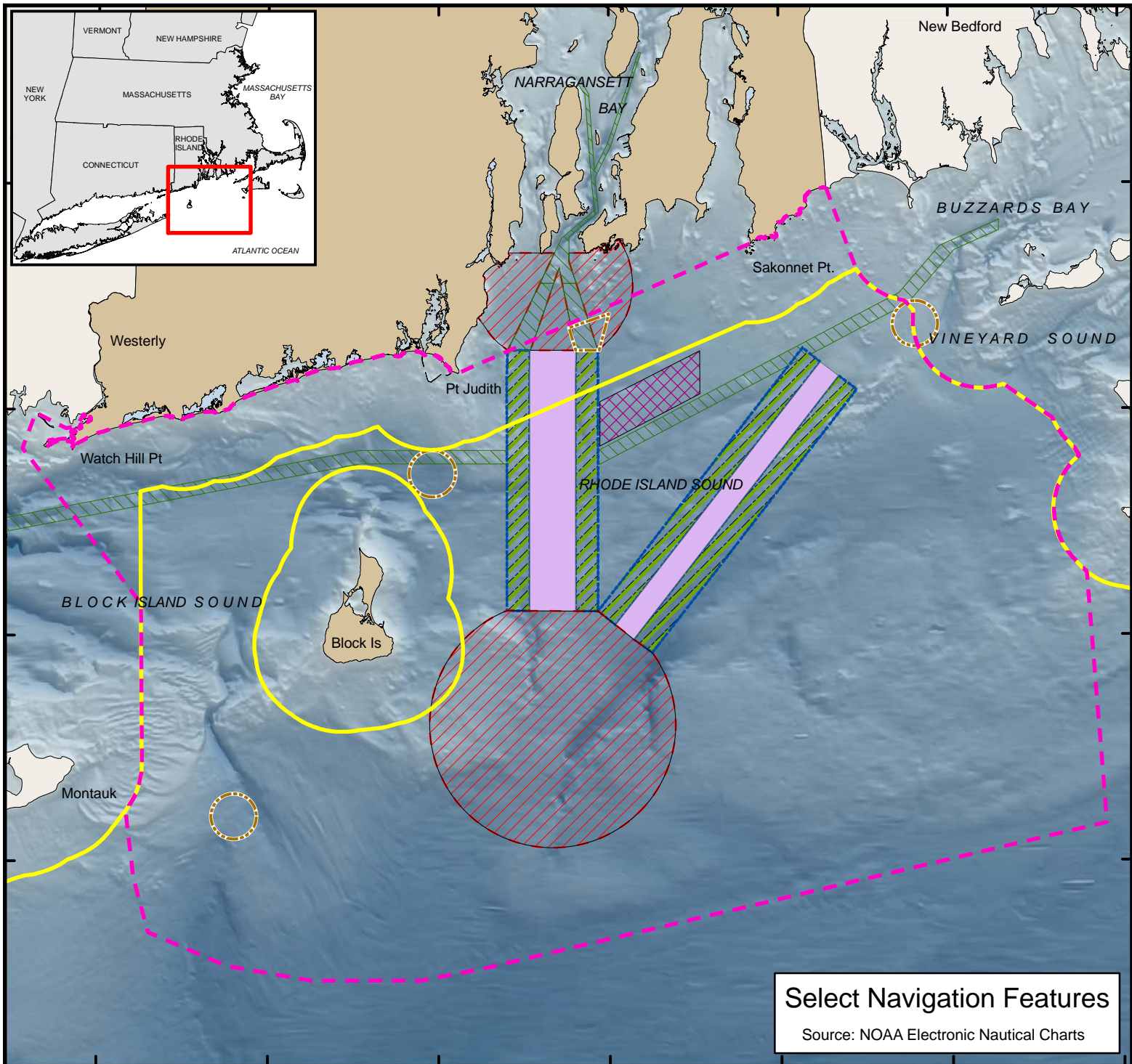


Rhode Island Ocean Special Area Management Plan (SAMP)

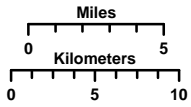
71°50'W 71°40'W 71°30'W 71°20'W 71°10'W 71°0'W 70°50'W

Map Key

-  OceanSAMP Study Area
-  State/Federal Waters Separation
-  Proposed General Anchorage
-  Pilot Boarding Area
-  Precautionary Area
-  Recommended Vessel Route
-  Shipping Lanes
-  Separation Zone



41°30'N
41°20'N
41°10'N
41°0'N



Coordinate System:
 Projection: RI Stateplane
 Units: Feet
 FIPS Zone: 3800
 Datum: NAD83

For Project Background Information:
<http://seagrant.gso.uri.edu/oceansamp>

For Project Map and Data Products:
http://www.narrabay.org/d_projects/oceansamp



Select Navigation Features

Source: NOAA Electronic Nautical Charts